

Parish Profile

St Michael's Church

Madeley, Telford



A warm welcome awaits you

WELCOME & INTRODUCTION

As you begin to read through our parish profile, we thank you for taking time to prayerfully consider what we have prepared. For our part we continue to pray for all those who consider the opportunity to join us in God's mission to the church and our local community.

St Michael's in Madeley, is situated on the southernmost tip of Telford, which means we face economic challenges but also can marvel at God's wonderful creation, with beautiful Shropshire countryside on our doorstep. Our mission statement is 'Knowing, Growing and Showing the Love of God' and we are keen to grow spiritually and numerically. Our heart for prayer and fellowship has led to steady growth for example through our monthly café church. We are looking for someone who can see the opportunities to where God is leading us.

We have been without a vicar (for reasons of illness) for two years which led to a decline in numbers. This has led to a fall in finances and there are always challenges with the building. Trusting in God though, we know that all things are possible. We have been twice the size we are now and, we firmly believe, we can regain those numbers and more.

We have a strong collaborative ministry, both within the parish and with other local churches. We are looking for a new vicar who shares our enthusiasm for working together to share God's love with our local community.

We seek someone who can help us:

Clarify our vision to share the gospel with our community

To see all generations come to know and follow Jesus

To see faith in Jesus grow within our congregation

This profile describes the wider community, our church, our local school, our foundations of faith in Jesus, and our journey but also our challenges and the opportunities for the person whom God is calling.

THE PERSON WE NEED

We are seeking a vicar who, as well as growing our own church family spiritually and physically, will be visible in the community and a conduit between the church and the local population. As a well established church we find ourselves wanting to engage more with the community in which we worship.

In short what we are looking for is someone who

- Is passionate about prayer and sharing God's word with us as we work with you to fulfil God's plan for our church.
- Is able to nurture, encourage and grow our dedicated fellowship.
- Has a love for the people of our community
- Has a heart for multi-generational mission and growth and would love to see all ages engaging with each other and worshipping God.
- Is a decisive leader with a heart for collaborative ministry. We want to work with you as do local leaders in the deanery because we believe together we can achieve more.

Finally, if you have a sense of humour you will fit right in with us.

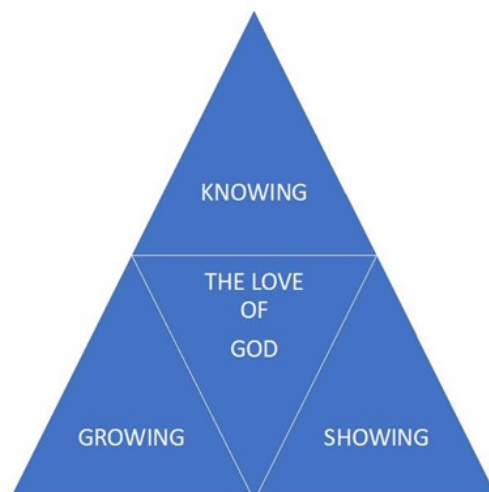
THE SKILLS NEEDED

A confident and effective communicator who is approachable and compassionate.

An ease of working with people of all ages, backgrounds, denominations and cultures both inside and outside of church.

A good administrator.

Able to manage time effectively with an awareness of their own well being.



WHAT WE CAN OFFER

'The harvest is plentiful but the workers are few' (Matthew 9:37) sums us up quite well. We are a committed group of people who will welcome you with open arms. What we lack in terms of numbers is more than made up by our enthusiasm and willingness to give things a try. You will have prayer support from our congregation especially from our faithful Prayer Ministry group who will pray with you and for you.

You will have a small but dedicated team of a retired priest, a Reader, and two active churchwardens, both of whom have practical skills. You ask and they'll find a way of doing it.

A baptism preparation group will support you in preparing families for baptism which will help you connect with the community. There's plenty of fellowship support, often involving food, as well as access to leaders from other churches in the area so you're never on your own.

A music director and small singing group are a faithful part of the church but new members have recently joined and this has potential for growth. There are people who organise rotas for each team which includes a service support team (stewards, readers, intercessors), as well as cleaners, refreshments and those who are on the sound and vision team.

A full PCC with a dedicated standing committee keeps the business side of church going and looks after the building. Above all, we love to worship God, to join together in fellowship and have a heart for new ways of sharing the Good News. We look forward to you joining us and being part of our church family.



We are all onboard the train, we pray that you want to be our driver.

Our dedicated Churchwardens



WELCOME FROM THE ARCHDEACON OF LUDLOW

Thank you for downloading and reading this profile – we're delighted that you have. The words you will read and the pictures you see capture the heart of the parish of Madeley.

The church is in good heart, and looking forward to welcoming a new Vicar to lead them forward under God. The retired clergy, the Reader, and the Churchwardens are leading the parish well, supported by the Rural Dean and other lay leaders including the PCC. Being part of the Severn Link Group means that there is mutual support and encouragement, as well as collaborative working across the parishes which are part of the Group (Madeley; Sutton Hill & Woodside; Coalbrookdale, Ironbridge & Little Wenlock).

The profile is the fruit of much prayer and hard work and we hope that, as you prayerfully read it, you will sense whether God is calling you to come and serve Christ here among us. Please know that we are praying for you as you do so.

LIFE AS A MEMBER OF THE CLERGY IN THE DIOCESE OF HEREFORD

The Diocese of Hereford is a place of contrasts. We're geographically large, but our population is small. We straddle six local authorities (Herefordshire, Shropshire, Telford & Wrekin, Powys, Worcestershire, Monmouthshire) and two countries (England and Wales), but we are one Diocese with one Bishop. We are predominantly rural, with scattered communities, but we have a vibrant cathedral city, several historic market towns and post-industrial towns, and serve estate communities as well.

We are all committed, whatever our context, to our calling to make Christ known, to love God, one another and our neighbours, and to work for the common good. We do this not only through our churches but also through our church schools and academies which are an integral part of our Diocese. Our diocesan values are that we are prayerful, Christ-like, and engaged, and we seek to live out those values in our varying settings in a way that is rooted in the local.

We had a diocesan Year of Prayer in 2023, and 2024 is our Year of Faith, focusing on teaching and equipping all of us – clergy and lay – to be more confident in our faith.

We work collaboratively wherever possible, knowing that ministry brings unique demands as well as unique privileges. We are small enough (in terms of numbers) that clergy can get to know one another and the diocesan staff quite easily.

Recognising that, while ordained ministry is a joy and a privilege it can bring challenges too, we've recently launched an "Accompanying" programme where all incumbents in a new post, whether this is their first incumbency or not, are linked with a member of our Mission & Ministry team who will not only act as a mentor for the new incumbent, but work with them and their PCCs to help discern how God is leading them to work out the plans and hopes you'll read in this Profile. This programme co-ordinates with our year-long Learning Community, "Servants and Stewards" run jointly by the central diocesan team and CPAS. The Learning Community meets monthly, and helps clergy reflect not just on the 'nuts and bolts' of leadership, but also on our own discipleship and how that links with, and is the basis for, our leadership. Previous cohorts have found Servants and Stewards very helpful not just in terms of the content but also in terms of building working partnerships with other clergy in the diocese.



If you would like an informal conversation about the parishes and the role, or about life as a member of the clergy in the Diocese of Hereford, please do get in touch with me by email or phone –

Fiona.Gibson@hereford.anglican.org or 01588 673571.

The Ven Fiona Gibson, Archdeacon of Ludlow

MESSAGE FROM THE RURAL DEAN

THE DEANERY

Madeley Parish is one of the four benefices which make up the Telford Severn George Deanery which include nine churches in ten parishes with a total population of around 26,000. It is one of the most diverse deaneries in the Diocese of Hereford. From the highly populated urban South Telford to the deeply rural village of Little Wenlock in the north and Barrow in the south, the contrast between the dense housing of Sutton Hill to the sparsely populated parts of Linley and Willey could not be greater.

The River Severn runs through our Deanery: to the north lie the estate Parishes of Sutton Hill and Woodside situated either side of Madeley Parish. Madeley alongside the communities of Ironbridge, Coalbrookdale and Little Wenlock are the birthplace of the Industrial Revolution and a world heritage site. These 6 parishes make up the Severn Link Group of Churches which are a distinct group where the 3 incumbents are of equal status. To the south is the Benefice of Broseley Parishes again steeped in historic sites.

Within the deanery we aim to work collaboratively across parish and benefice boundaries as we seek to develop a collective approach to mission and ministry in the area. We meet monthly for Chapter and termly for Greater Chapter to pray and support each other in our ministries of these challenging areas and times.

This is an exciting time for mission and outreach, seeing God at work in peoples' lives. As one of 4 full time clergy in the deanery and with the wider ministry teams you would be welcomed and supported in our mission together.

Dawn Taffinder
Rural Dean



WHERE WE ARE

LOCAL AREA

Madeley, a market town, with a population of 6,436 in the 2021 census, lies in the town of Telford and has its own parish council. Other places of worship in Madeley include a Baptist Church and a Catholic Church. There is a leisure centre run by the council in Madeley with a swimming pool, a well-equipped gym and rooms for sports activities. Separately, there is a dry ski-slope within easy walking distance that is also council run. Dentists and doctors are to be found locally.



Swimming pool at the local leisure centre



Jubilee House, home of Madeley Town Council



Telford Town Park

Telford Town centre with many shops and restaurants is a short distance of five miles away and also has two cinemas. An award-winning park is located there too. A popular theatre, situated at Oakengates hosts a variety of acts throughout the year.

The world heritage site of Ironbridge is just down the road and is home to several museums celebrating Victorian life and, prior to that, the industrial revolution. Many tourists come to the area to see the first iron bridge from which the town gets its name.



The World's first iron bridge



Blists Hill Victorian Town within walking distance



The Wrekin

Madeley has plenty of countryside close by as well as a good network of footpaths and cycle paths. A short drive away is The Wrekin, a local hill which is well known and well walked.

WITHIN THE COUNTY OF SHROPSHIRE

The historic towns of Shrewsbury and Ludlow are within Shropshire and attract many visitors during the year. Many are drawn to the South Shropshire hills. The River Severn runs through the county (and the deanery) with rowing clubs and leisure facilities connected to it.

The M54 links the area to Birmingham and the M6 running north and south and there are excellent connections to Shrewsbury, the county town. The railway line running from Shrewsbury (and on to Wales) to Wolverhampton (Birmingham and London) has a station in Telford (approximately five miles from Madeley).

WORSHIP

Our tradition can be described as low evangelical. Services follow a relaxed structure but with respect to tradition. Members of the congregation read the lessons and lead the prayers of intercession, and are involved in other specific ways as appropriate, including short sketches. Services end with light refreshments and most of the congregation stay for the fellowship. Prayer is also offered after the service, with two people from the Prayer Ministry Group each week.

Regular Services at 10:30am
1st Sunday – Morning Worship
2nd Sunday – Holy Communion
3rd Sunday – All Age Café Church
4th Sunday – Holy Communion
5th Sunday – Morning Worship



Rev Rosemary Freeman,
associate minister

Jan Holt,
Reader



Café Church has refreshments at the start and available throughout. Soup, bread and fruit are also provided by way of light lunch on those Sundays. Baptisms take place on the first Sunday of the month either in the main service or at 12.30pm or 2.00pm. Families are welcomed by members of the congregation.

MUSIC AT ST MICHAEL'S CHURCH

We enjoy a mix of traditional and modern songs chosen initially by the Music Director Revd. Rosemary Freeman, on the understanding that the preacher or leader is at liberty to change the suggested songs.

After around thirty years the digital organ is no longer usable and, while we are not formally fund-raising for a new one, people make donations in an informal way to a ring-fenced organ fund. Meanwhile, there is a good sound system which is used for the singing group (maximum of seven) and the keyboard, as well as the spoken voice. There is a rota of three keyboard players.

SOUND AND VISION

When the church was reordered 16 years ago a new sound system was installed which comprises of a mixing desk and a selection of radio and wired microphones.

We can play audio from CDs, MP3s, and from phones which is especially useful for weddings and funerals. In addition, CAT 5 cabling was installed throughout the church to allow flexible data connectivity.

We regularly use projectors for our services. Since Covid, most services are now live streamed. This enables viewers to watch at home if they are unable to be at church and to catch up later. A small team operates the sound and vision on a weekly basis. We also have a selection of stage lights along with a control desk.



PRAYER

We believe prayer to be invaluable and the very basis on which everything is based. Faithful members pray privately and respond to messages sent by the prayer chain email when needed in times of emergency. Monthly prayer meetings have been held for the last two to three years with very low numbers but powerful and positive times of prayer.

A prayer ministry team operates within the congregation each week in church. This team have been trained following New Wine prayer ministry guidelines and have remained a faithful group who keep confidences and trust each other. They meet regularly to check in with one another and have time to air and share. From this, members of the group have been encouraged to write monthly prayer cards and a monthly prayer diary.

Church members know the prayer ministry team can be approached and this has built up the confidence of those praying to pray in faith. Hearing and seeing answers to prayer have lifted us all and we give thanks to God for his provision.

We pray in faith for you, the reader of this profile, and a special prayer is used to remind everyone that God has a plan for our next incumbent.

Prayer is encouraged at all meetings and people are now praying out loud when they once wouldn't have done so.

A prayer corner is set up in church and is regularly changed to encourage people to pray and leave messages for which others can pray.

The prayer corner in church

Prayer during the vacancy

Wise and generous God,
We thank you for your church here at St Michael's.
We praise you for sustaining her throughout the centuries and for all who have worshipped, served and witnessed here.

You know our needs before we ask but, as our loving Father, you like to hear your children's prayers and you grant them in your perfect way and in your perfect time.

We ask you to sustain us with thankful and willing hearts to continue your work here.

We pray for wisdom and discernment as we seek your new vicar for this church.

Give us open hearts and minds to welcome whoever you choose, confident in your faithfulness.

We pray for whoever it is that you are calling here. May they listen to you and heed your call.

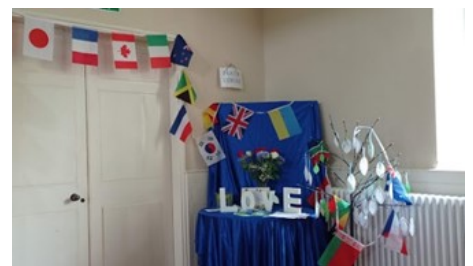
We pray for the whole process and all who are involved, and we place all of this into your loving hands.

For the sake of your kingdom and glory we ask these things, and in the name of Jesus.

Amen.



'Be joyful in hope, patient in affliction, faithful in prayer.'
Romans 12:12



'Do not be anxious about anything, but in every situation, by prayer and petition, with thanksgiving, present your requests to God.' Philippians 4:6

CHURCH GROUPS

BIBLE STUDY

Small groups meeting for bible studies have long been held and attended by church members. Often held in church nowadays, they provide a way where people can deepen their faith whilst being able to ask questions. Prayer is always a key factor in these groups. There is sometimes one running on a weekday lunchtime (with lunch provided) and another one on a Monday evening (MEGG-Monday Evening Growth Group). The groups that meet have gelled together well.

Lent groups are often held throughout the Severn Link group and people are encouraged to travel to another church for a group that meets at a time to suit them. These are generally well appreciated although numbers can fluctuate. We would like to see more of the congregation being encouraged and motivated to get involved in the groups and taking responsibility for leading them too. A men's group was started within the Severn Link group some years ago but folded when a leader left.

FLOWER TEAM

The flower team has a wealth of experience. Run faithfully for many years by a small group, it has changed and developed over the years with new members coming along and learning the skill of flower arranging. Using silk flowers for much of the year, the team are delighted to be able to use real flowers on occasions such as Christmas and Easter. The team enhance the church building with their creations and it is part of the worship to God.

Having the celebration of King Charles' coronation enabled the team to decorate the church in appropriate colours.



ECO CHURCH

Pre-covid, we had a small but active eco church group which worked together to achieve a bronze eco award. Although we continue to be energy conscious and aware of environmental issues, the group has not met for 3-4 years. We were able to fund raise so that we have twinned both our toilets as part of the toilet twinning scheme.



CHURCH GROUPS (Continued)

FELLOWSHIP

Fellowship is a group that meets on the last Monday of each month. The committee that runs fellowship works well together, each member to their strengths. It's something we all feel called to and enjoy.

Each meeting starts with a short worship time which leads into an activity that includes magicians and entertainers, singers, quizzes, summer teas, beetle drives and 'of course' a Christmas Dinner at the local Carvery. Madeley Parish Council give us a generous grant toward this meal.

It is a group where its members enjoy being together and looking out for each other. The meetings end with tea, coffee and biscuits and a time of fellowship together.

Members also support the charity Mercy Ships.



ABOUT THE CHURCH

BUILDINGS

ST MICHAEL'S CHURCH

St Michael's Church is situated on the edge of Ironbridge World Heritage Site, close to the centre of Madeley and is a grade II listed building designed by Thomas Telford and built in 1797.

Attached to the church is a large graveyard which is now closed (other than burials in existing graves and a cremated remains plot), with Telford and Wrekin Council responsible for its maintenance. The graveyard also contains several graves of historic significance, one being the grave of Reverend John Fletcher who was Vicar of Madeley and a close friend of methodist John Wesley which strongly influenced the theology of the parish and still does today.

There have been several alterations over the years with the latest being in 2008 when the interior was reordered, with the removal of pews and introduction of movable seating to give us a flexible space in which to work and worship. At the same time new audio and visual equipment was also installed, along with toilet facilities and a kitchen.

We are currently trying to get work done on the tower which includes the repair of the louvres and preventative repairs to the stonework. There are eight bells in the tower which have not been rung since the late 1980's due to cracking of the tower structure.

Our website gives further information about the church and its history and can be found here: <https://www.stmichaelsmadeley.org/>

Top picture: chairs set out for a regular Sunday service

Bottom picture: flexible seating being used for café church

A projection of an image of the cross for our Christmas service



PCC

The PCC is currently made up of twelve members and one co-opted member (our associate minister).

One of our church wardens who is lay vice chair is currently chairing our meetings. We meet six times per year being the second Tuesday of every other month in the church.

We have a standing committee which comprises of The Vicar, church wardens, PCC secretary and treasurer. We have an appointed health and safety officer who regularly updates policies. We recognise that health and safety is everyone's responsibility and we aim to keep any issues to a minimum.

Our finances are becoming more challenging, however, we have always met our agreed parish offer.

The PCC takes safeguarding seriously, and have adopted the Church of England safeguarding policy and have an appointed safeguarding officer.

The Electoral Roll currently stands at 81.

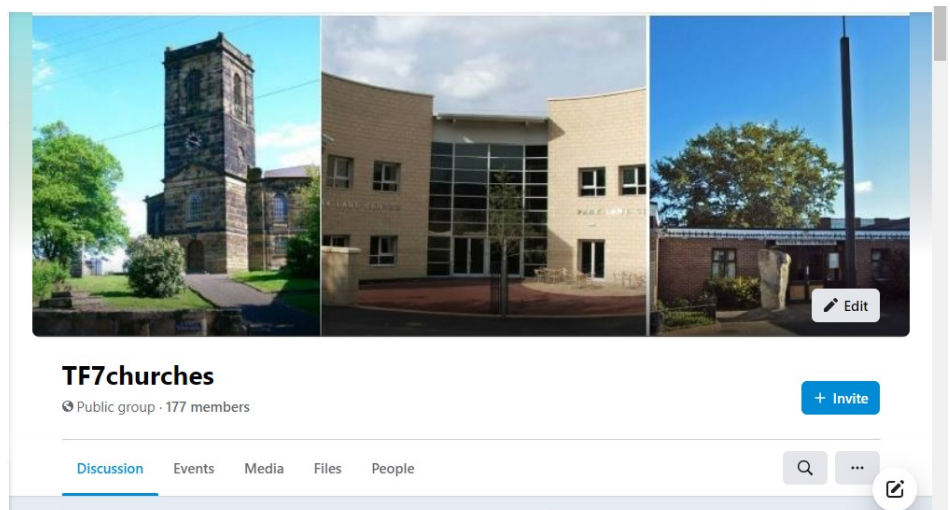


SOCIAL MEDIA

We have a Facebook page, <https://www.facebook.com/groups/TF7churches> that informs people of what's going on. It is an ideal showcase for photos of activities we have been involved with. The link to our church services are available on here too as well as our weekly noticesheet. At the time of writing, there are over 170 members.

Our church website <https://www.stmichaelsmadeley.org/> is currently managed by one person and receives requests and enquiries from the public as well as providing information about the church and its history.

Our Facebook homepage



ABOUT THE PARISH

SCHOOLS

Within the parish there are four primary schools;

- St Mary's Primary (a catholic school)
- Houghton School (a special education school),
- John Randall Primary (where our Reader works as a teaching assistant and uses opportunities to bring church and school together)
- John Fletcher of Madeley (see next page for further details)

And one secondary school (Madeley Academy).

Members of the ministry team go into John Fletcher of Madeley school to lead collective worship . Regular visits to the church by local schools for RE and history lessons show the good links built up over the years.

More recently, Year Six children from primary schools have joined together to meet before they transition from primary to secondary schools. Feedback from this has been positive from both students and teaching staff.

Experience Easter has been a regular event for the last few years and alongside Sutton Hill church this is being developed with both St Michael's Church and Sutton Hill Church being used for other 'experience events' (Experience Harvest, Experience Pentecost). These have been made possible by working in collaboration with church members volunteering their time and schools have appreciated the high-quality experiences for their students.

Children and staff at John Randall School creating a union flag for the Queen's platinum jubilee.



Madeley academy: a secondary school for children aged 11-18



JOHN FLETCHER OF MADELEY SCHOOL

One of the primary schools, John Fletcher of Madeley, is a joint Anglican and Methodist foundation school. The vicar of Madeley is a governor and there is also an additional parish governor. Historically there has always been a good relationship with the school, although this has been more difficult in recent years. However good contacts are currently in place and we seek someone who will continue to strengthen and grow those relationships further.

This is a statement from the current chair of governors, Paul Owens of John Fletcher of Madeley School.



Whatever you do, work at it with all your heart. Colossians 3:23

At John Fletcher of Madeley Primary School our Christian vision, and the values underpin and shape all we do. They are not only for our children but the whole school community, as it is our belief that each child is a unique individual, a creation of God, and every child, without exception, is precious. Our aim is to nurture and encourage them to recognise this in themselves and others, and so be the best that they can be to know that if they put their heart into what they do, they can realise their dreams. In this way, we develop happy, successful and flourishing life-long learners.

Our recent OFSTED inspection was Good in all areas and our recent SIAMS inspection was a Judgement 1 which highlighted:

‘Love is the heartbeat of this school, elevating everyone’s experience of life and learning. The Christian vision is evident as love in action, which motivates every aspect of school and transforms lives. Members of this cohesive and loving school community are driven to follow in the footsteps of the Methodist preacher, John Fletcher. He served the community of Madeley with Christian goodness. The school builds on its joint Anglican and Methodist foundations as it continues to do all the good that it can.’

I have been the coopted Church of England and Hereford Diocese governor for 8 years and the Chair of governors for the last 6. The school has very strong connections to St Michael’s, [previous vicars have been] active members of the Governing body being the denominational and pastoral lead as well as the safeguarding lead.

The school population use the church whenever possible for harvest festivals, Easter and Christmas celebrations, we would very much like to continue and expand that bond going forward.



<https://johnfletcherofmadeley.co.uk/>

COMMUNITY LINKS

COMMUNITY ORCHARD

Sitting alongside the churchyard at the back of church is a community orchard. This has been developed on land (previously used as allotments) owned by Madeley United Charities, whose constitution dictates that The Vicar of Madeley is chair of the charity.

It is a place for the public to pick fruit from the many trees in the orchard, and there are places to sit and hear the birdsong and appreciate the flora around. A team of volunteers manage the area and many people walk through this tranquil place to the churchyard and up the hill to the church.

The community orchard is the perfect setting for Muddy Church, with space to explore and appreciate God's wonderful creation.



MUDDY CHURCH

In 2023, Muddy Church met in the orchard during each week in August. St Michael's Church is made available as a wet weather alternative. On average thirty-five children and twenty-five adults attended each session. It also meets half termly to celebrate Christian festivals. Good collaborative links with Sutton Hill and Woodside Churches means that this works well as a community venture.

REMEMBRANCE SERVICE

A community service for remembrance is held in the centre of Madeley on Remembrance Sunday. It is a joint collaboration between the local churches, Madeley Town Council, the Royal British Legion and usually led by The Vicar of Madeley, this event is also technically supported by St Michael's sound and vision team. This is a well attended occasion that continues to grow year on year.



The annual remembrance service at Madeley War Memorial

CIVIC SERVICES

Over the last couple of years, links have been forged with Madeley Town Council and a number of civic services have been held at St Michael's: celebrating the Queen's Platinum Jubilee, The King's Coronation and a Civic Carol Service.

COMMUNITY LINKS (CONTINUED)

In the past, a summer fete called 'Heavens Above' has been held which included events such as abseiling from the tower, a zip wire for teddies, parachuting teddies, stalls and refreshments all of which have shown the community that we are here. Last year we celebrated the coronation with a morning service followed by a barbeque to which members of the community were invited.



We enjoyed time together as a church with a barbeque celebrating the Queen's Platinum Jubilee and later the coronation of King Charles III.



MADELEY CHRISTMAS LIGHTS

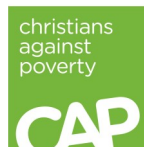
Just before Christmas we made a start to engage with the community by having a church stall at Madeley Christmas Lights switch-on-ceremony selling jewellery, cards, craft items and promoting Christmas services.

We need motivating to do more initiatives like this and we're hoping that you can help us engage with the people of Madeley.

Many individual members of the congregation are involved in local community projects.



Warm spaces in Madeley



The Anstice, a community building in Madeley



TELFORD CRISIS SUPPORT

As food poverty increases in this country there is an ever-present need for donations to support families in Telford. No one should go without the essentials to keep their families fed, clean, clothed, warm and healthy.

The congregation are strongly encouraged to donate non-perishable food on a regular basis or by making monthly monetary donations.



REACHING OUT TO THE LOCAL COMMUNITY

ROC (Redeeming Our Communities)

The ROC café that meets at St Michael's Church is part of the UK community engagement charity. They provide a safe space to those within our local community who are in need, helping to combat loneliness, and offering support to the vulnerable, those with mental health issues and those on limited incomes including the homeless.

They meet weekly and provide a free hot meal (donations welcome) followed by fun social activities that promote well-being and a feeling of community.

The café has five Christian volunteers from within St Michael's congregation and other local churches and a regular attendance of twenty members.

Presently there is one other ROC café meeting in Telford, and the charity is in the process of applying for grant funding to allow more cafes to open across Telford in the future.

Some of the members attend St Michael's church or other local churches. By example and through conversation they aim to foster an awareness of the Christian faith and the opportunity for members to explore this for themselves.



ROC Volunteers displaying their banner outside St Michael's Church



Members of ROC café enjoying a Christmas party

THE VICARAGE

The vicarage which is situated next to the main driveway to the church is a large four bedroomed house.

The downstairs comprising of a hallway, study, dining room, living room, WC, kitchen and utility room.

Upstairs comprises of four bedrooms and separate WC and bathroom.

The vicarage has a large, enclosed garden, with private rear entrance and driveway which would accommodate parking for three cars, there is also a brick-built garage attached to the property.



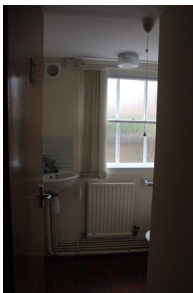
The vicarage back garden

The back entrance to the vicarage



The side of the vicarage with the garage and parking area

VICARAGE DOWNSTAIRS

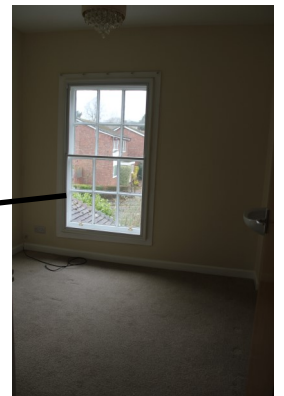
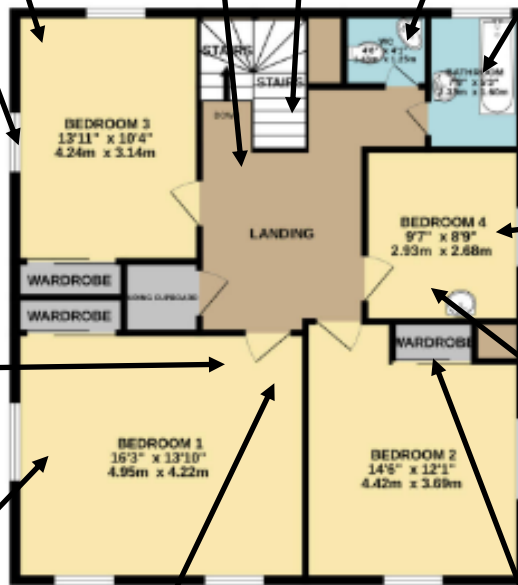


GROUND FLOOR
1218 sq.ft. (113.2 sq.m.) approx.

VICARAGE UPSTAIRS



1ST FLOOR
900 sq ft. (83.6 sq.m.) approx.



A MESSAGE FROM THE BISHOP OF HEREFORD

I'm delighted that you are reading the Madeley parish profile. They are a wonderful spiritual group of people with a big heart for one another and for the many in the parish who struggle in life. They are imaginative, and open to new things. The right person will find a richly rewarding ministry here, with great potential for growth.

I hope you would find Hereford Diocese a supportive and encouraging place to exercise such a ministry. I am convinced that the centre of the diocese is the parishes. My role, and that of the other senior staff and diocesan team, is to encourage you to be the best you can be. We recognise that ministry is a much more demanding task than it was in the days when the culture did your evangelism for you. We want to be a supportive place that encourages experimentation and boldness in this new environment.

I do hope you will apply.

We look forward to meeting you.

With best wishes

A handwritten signature in black ink, reading "Richard Hughes". The signature is written in a cursive, flowing style with a large initial 'R' and a long, sweeping underline.



CPAS, the largest Church of England patron, is patron for St Michael's Madeley, and is delighted to be able to support this next stage in their life and ministry.

CPAS is one of the 10 historic Anglican Missions, and for 185 years has been supporting local churches in reaching the whole nation with the Gospel.

Besides their work appointing new incumbents for parishes in every diocese in England, CPAS runs 100+ holidays each year at which children from all walks of life have the opportunity to encounter Jesus and strengthen their Christian faith. CPAS also supports church leaders (lay and ordained) all around the country in their important task of vision, leadership and evangelism. CPAS continues to develop creative and effective resources to help churches address these significant themes.

Our aspirations are currently distilled into four prayers: "Every Church a pathway to faith; Every leader a catalyst for evangelism; Every Christian a courageous witness; Every child the chance to explore Jesus."

Revd Mike Duff

Patronage Secretary, CPAS